



**ALWAYS AHEAD OF
THE WAVE**

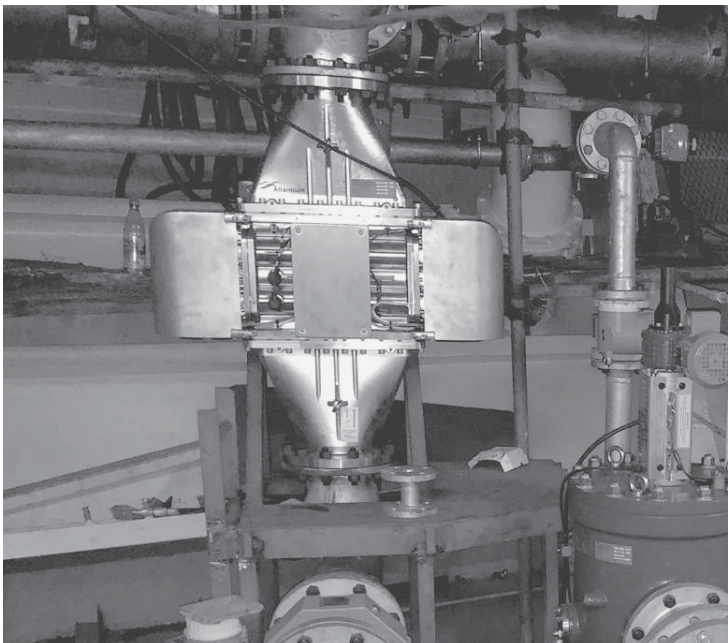
PURESTREAM™ ONE PASS UV BWMS

ABOUT ATLANTIUM

Tackling the toughest water treatment challenges. Leading the way in BWT.

Atlantium takes water safety to levels never achieved before. The company's vast experience and expertise is built on more than 20 years serving global tier one companies in a wide range of industries, critical applications and processes. Atlantium has more than 3,500 installations and an established infrastructure worldwide.

Atlantium is the only technology owner in the BWMS world with the most advanced UV systems capable of handling the toughest water treatment challenges.



more than

4,000

installations



ALSTOM

CERMAQ

MQWI



The company's ability to deliver compliance in the toughest water conditions was a driving factor in the creation of Purestream™.



WATER TREATMENT EXPERTS

Purestream was designed based on Atlantium's extensive experience working for more than **20 years** with and according to the strictest regulatory bodies, such as the **USEPA**, on compliance-intensive applications. Atlantium's proven record of performance and reliability has led to its selection by both the **US Bureau of Reclamation** and the **US Navy** to provide water disinfection solutions to some of their most critical operations.



Chosen by
the US Navy



Chosen by the US
Bureau of Reclamation



Highest virus
validation by the EPA

Between 2017 – 2019

33%

of BWMS failed either performance or functional testing.

WITH PURESTREAM™ WE MAKE SURE YOU PASS EVERY TIME

**Unrivalled regulatory expertise delivers
reliable results**

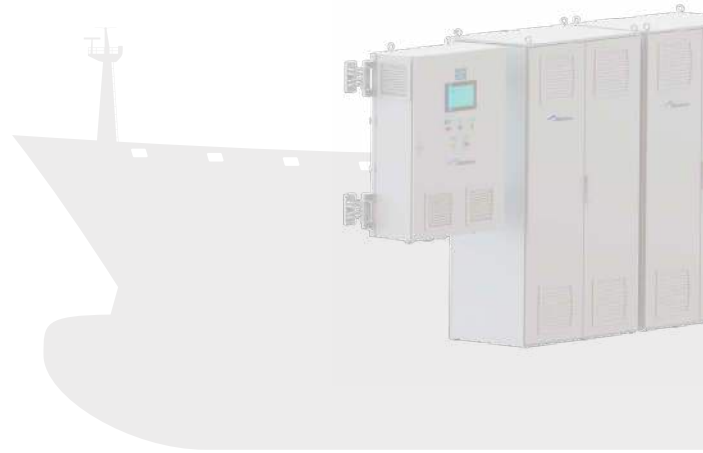
The regulatory landscape for BWMS compliance is rapidly changing. Today, all BWMS must pass microbiological testing on commissioning and are subjected to on-going random testing by port authorities. Failure to pass such microbiological and functional inspections may result in heavy fines and/or sanctions.



TECHNOLOGY

**Works so smoothly,
you won't know it's there**

Purestream meets the highest regulatory standards for all water types – sea, fresh and brackish water. It's the approved treatment for the worst-defined water conditions down to UV Transmission (UVT) of 40% and intensity of 7W/m². Enabling continuous operation where other BWMS are not allowed to operate!

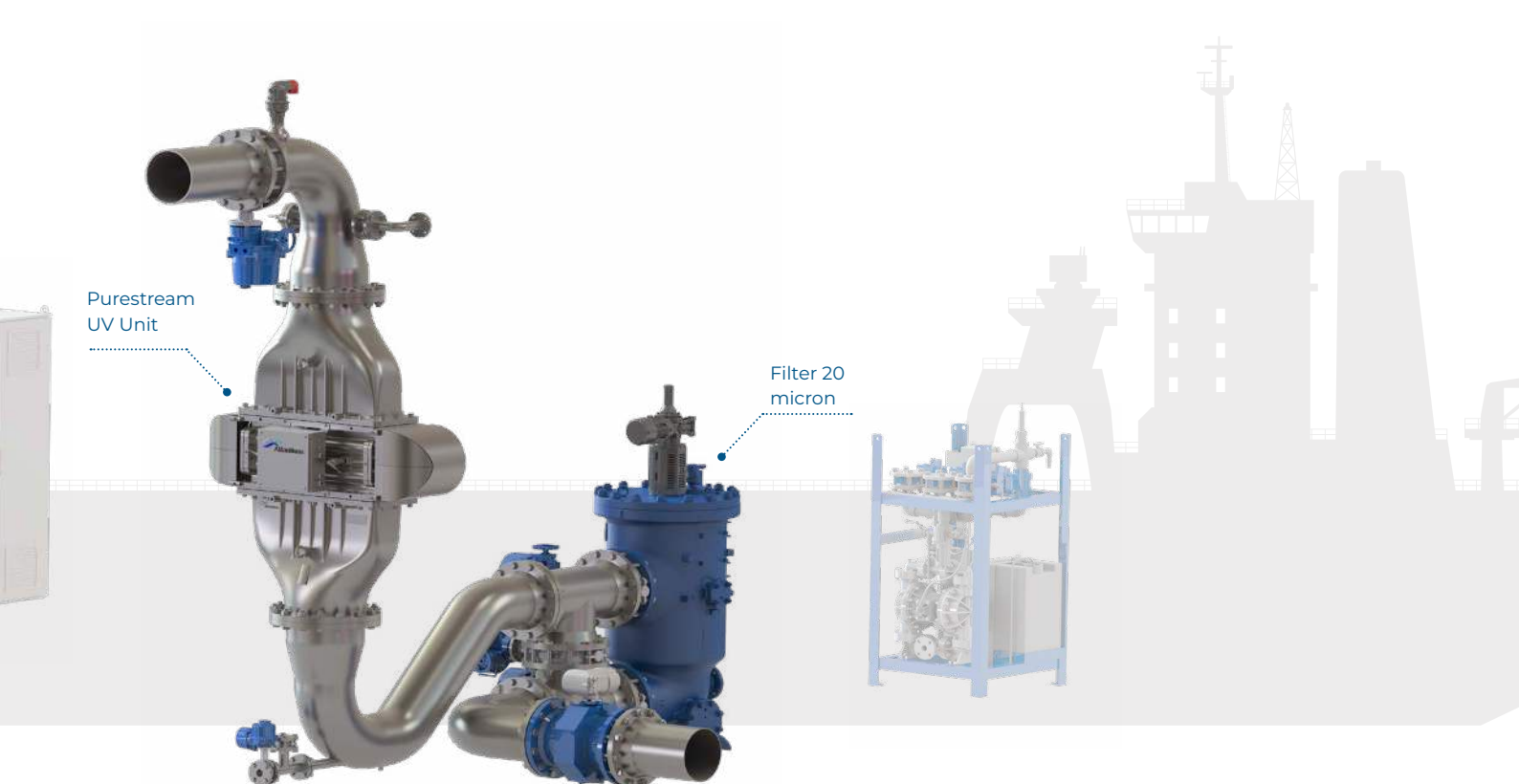


**Only one treatment
with One Pass**

With One Pass, only one treatment during ballasting is required for IMO compliance (Marine Water). There's no need to treat the water during de-ballasting.

**Using half the time
and half the energy!**





No holding time with Purestream GO (IMO)

Purestream GO, enables the minimum allowed holding time even in the toughest water conditions for USCG and no holding time for IMO.

you can de-ballast
whenever you need.





SERVICE & SUPPORT

With Purestream, you always have peace of mind

When you choose Purestream, you choose the support of our dedicated and professional team who will go above and beyond for you. Our worldwide presence of warehouses & technicians serves the most sensitive industrial operations and are always ready to promptly respond your service call.



Committed to providing you with effective solutions

Global 24/7/365 T1 support center

Direct Atlantium engineering support availability

Digital support experience
(Whatsapp, mail or call)

Visual training and support pack integrated in each system

Dedicated multi-lingual technical team located around the globe

Complete Turn-Key solution including detailed engineering and installation

A world map with a light gray background. It features several blue icons of cargo ships and teal circular icons with white symbols (a ship, a dollar sign, and a percentage sign) indicating global shipping routes and ports. The icons are distributed across North America, South America, Europe, Africa, Asia, and Australia.

Pure-stream™ UV BWMS	Capacity Range (m³/h)	Filter - Loose					UV Unit - Loose (Vertical)				Ballasts Electrical Cabinet(s) - Loose					Power Consumption Nominal (kW)	Total Weight (kg)
		Dimensions (m)			Qty.	Weight (kg)	Dimensions (m)			Weight (kg)	Dimensions (m)			Qty.	Weight (kg)		
		L	W	H			L	W	H		L	W	H				
PS-100	≤150	0.72	0.62	1.01	1	495	1.04	0.96	0.41	170	0.7	1.0	2.2	1	320	14.5	985
PS-200	≤250	0.72	0.62	1.01	1	495	1.04	0.96	0.41	170	0.7	1.0	2.2	1	320	22	985
PS-300	≤350	0.72	0.62	1.01	1	495	1.04	0.96	0.41	170	0.7	1.0	2.2	1	320	36	985
PS-500	≤500	0.73	0.72	1.28	1	600	1.63	1.29	0.55	484	0.7	1.0	2.2	1	320	63	1404
PS-900	≤900	0.73	0.72	1.28	1	600	1.63	1.29	0.55	484	0.7	1.0	2.2	2	320	101	1724
PS-1200	≤1200	0.73	0.72	1.28	2	600	1.63	1.39	0.66	550	0.7	1.0	2.2	2	320	88	2390
PS-1500	≤1500	0.73	0.72	1.28	2	600	1.63	1.39	0.66	550	0.7	1.0	2.2	3	320	139	2710

Purestream™ Specifications – Skid System

Notes:

1. Specifications subject to change without notice. Dimensions, weights and kW consumption are for reference only, ICD drawings should be used for design purposes.
2. Weights are dry
3. Power supply: 400/440VAC, 50/60Hz
4. Total weight: Filter (PS-1200/PS-1500 include 2 filters), UV Unit and Ballasts



**WE ARE HERE
TO STAY**